

Conservation Enables Farm's Transition to the Next Generation

Ziehms Protect 244-Acre Tiashoke Farm in Buskirk

Frank Ziehm started dairying with his dad on their family farm in Albany County milking 40 Ayrshire cows. At the time, development pressure was causing a lot of small dairies to go out of business and the infrastructure they depended on was collapsing. They knew that to survive they would have to expand but didn't have the land or water to do so.

A friend in the business encouraged them to move their operation to Washington County. There was plenty of good land and a strong network of farms that kept the necessary support industries, such as seed and feed companies, veterinarians, tractor supply and repair shops, thriving.

Frank and his father bought a 244-acre farm in Buskirk near the Hoosic River and that's where he married his wife Terry and raised three sons, Brian, Eric and Stuart. Frank recalls that everything he learned was on the job. Taking advantage of the expertise of fellow dairy farmers, the Washington County Farm Bureau and Cornell Cooperative Extension, he grew and modernized the business, gradually introducing new technologies and more cows.

As each of Frank and Terry's sons has graduated from Cornell, they have chosen to come back to the family farm. Together, the boys purchased a 340-acre farm in Easton that gives them the land to support more cows, greater flexibility for growing crops, and the opportunity to apply their education to new endeavors.

continued on page 4



The Ziehms feel good about conserving their land for future generations.



Local farms and forests are vital to our future.

The Agricultural Stewardship Association is a non-profit land trust founded in 1990 by local farmers, agribusiness representatives, and conservationists to protect land for agricultural and forestry uses in Washington and northern Rensselaer Counties. We accomplish our mission through land conservation and public education programs. To date, we have assisted landowners with the conservation of 7,332 acres of farm and forest land.

ASA receives funding from its members and supporters, The Conservation Fund, the New York Conservation Partnership Program and private foundations. The New York Conservation Partnership Program is administered by the Land Trust Alliance Northeast Program with support from the State of New York. Together, we are working to ensure that farms and forests will be part of everyone's lives for generations to come.

Board of Directors

Seth Jacobs, President
Argyle
638-6124

Sean Quinn,
Vice President

Easton
692-9650

Mary Ellen Williams,
Secretary
Greenwich
692-7893

Glenwood Rowse,
Treasurer
Cambridge
692-9836

Nancy Brown
Jackson
692-3120

Leon Clark
Hampton
282-0031

Phil Gitlen
Easton
487-7607

Tom Jilek
Salem
854-3721

Remus Preda

Argyle
638-8263

Jim Ruhl
Clifton Park
877-5949

Meg Southerland
Salem
854-3250

Margaret Stokowski
Granville
642-2430

ASA Staff

Renee Bouplon,
Senior Program Manager

Janet Britt,
Easement Steward

Meegan Finnegan,
Outreach & Development

Teri Ptacek,
Executive Director

Maria Trabka,
Project Manager



Agricultural Stewardship Association

28R Main Street, Greenwich, NY 12834

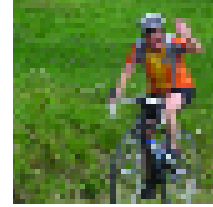
ph: 518-692-7285

fx: 518-692-7720

asa@agstewardship.org

www.agstewardship.org

From the Executive Director



Good news! This past September we completed yet another Purchase of Development Rights (PDR) project and helped Frank and Terry Ziehm protect their 244-acre Tiashoke Farm in Buskirk. We invited the Ziehms to tell

their story at our Landscapes for Landsake art opening. It was truly heart-warming to hear our members applaud the Ziehms for making the important decision to conserve their valuable farmland for the benefit of their family and the community.

This year has been important for ASA in developing new partnerships. The Tiashoke project is a good example of the partnership ASA facilitates between community members and farmers. A partnership with the Nordlys Foundation and Saratoga PLAN enabled us to start a program to build a network of financial and legal experts in the finances of conservation, a major benefit to local landowners. Rensselaer County has partnered with ASA, asking us to lead their Farmland Protection Program. We worked with Cambridge Valley Cycling and Farm Team Cycling to host a very successful bike tour (85 riders!) of conserved farms in southern Washington County to raise support for conservation and local farmers.

As a PDR veteran, ASA was invited by Pat Hooker, the new Commissioner for the Department of Agriculture and Markets, to be part of a task force to improve the farmland protection program. I admire the Commissioner's dedication to making this process work better for farmers. He and his staff met with Senator Betty Little, the Farm Bureau and ASA to discuss the issues. This year, we are working with two counties and three towns to request state funding to protect a total of 2,300 acres on eight farms and are looking forward to an improved program.

Thank you to everyone who has volunteered, participated in, or helped fund the many successful events we had this past year. I am grateful for the wonderful community we have here and the support you all give for farming and farmland conservation.

Your support is making great things happen!

Teri

Creative Partnership Keeps Land in Agricultural Production

Castanea Foundation Donates Conservation Easement on Beadle Hill Property

For close to fifteen years, a portion of the 107-acre Keeler property on Beadle Hill had been rented on an annual basis by Al Stannard. Al and sons George and Burt operate Ren-Wa Farm, a 100-cow dairy less than a mile away on Colonel Burch Road. The land is important to their operation because it can be worked early in the spring and contains a high percentage of high-quality soils.

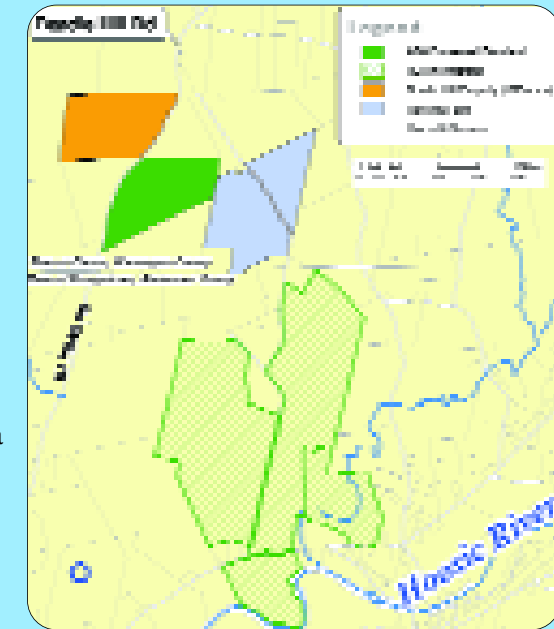
The house and surrounding agricultural land were put up for sale during a heated real estate market in early 2006. The property affords stunning panoramic views across much of southern Washington County, and neighboring farmers were concerned that it would be vulnerable to non-farm development.

The land is part of a larger landscape of diversified and productive working farms. In addition to thousands of acres of nearby cropland used to support dairy, the parcel is adjacent to land of the O.A. Borden & Sons apple orchard, and is located directly across the road from Elihu Farm, a sheep and egg

farm, of which 108 acres were previously conserved by Bob and Mary Pratt and ASA.

ASA asked conservation partner Castanea Foundation to consider purchasing and protecting the property. They purchased the property in September 2006, and donated a conservation easement to ASA on the entire 107 acres. The Stannards now work the agricultural land under a five-year lease, and have been offered an option to purchase the land at its agricultural value. The house and surrounding 13 acres, protected by the conservation easement, were sold to recover some project costs.

"A significant component of Castanea Foundation's mission is to help to secure and conserve the local agricultural land base and strengthen agriculture in the region," explains Castanea Foundation project manager, Kerri Culhane. "Working in partnership with ASA and local farmers helps us fulfill our mission."



Frank likes to say that farming is a team effort, and each family member has a different role; Brain manages the Easton farm and heads up special projects, Eric is herd manager and Stuart oversees day-to-day business operations. Together with Frank, they form Tiashoke Farm, LLC, milking 500 Holsteins and producing more than 13 million pounds of milk per year.



Stewart, Frank, Terry and Eric Ziehm talk to Tour de Farm Cyclist about their operation.

With three grown sons taking on more of the business, Frank and Terry started to think about their retirement. They wanted to transition the land in Buskirk to the boys and support their plans for the future. The boys wanted to conserve their land in Easton and use the sale of development rights to invest in their growing operation.

Working with ASA, they submitted an application to the state. Teri Ptacek, ASA's executive director, urged Frank and Terry to add the farm in Buskirk, which strengthened the application. To everyone's surprise, the smaller farm was funded first and the Easton farm was accepted the following year.

Frank and Terry admit that they were skeptical of conservation at first. Through the process, though, they have come to believe that in conserving their land they are not only investing in their own families' future but also helping to support the dairy industry and local agriculture. They feel that conserving the land is the first step to ensuring that there will continue to be enough dairies to support the infrastructure that they, and other farmers, rely on. Frank explains, "I couldn't farm the way my father did, and my sons can't do things the way I did. Sometimes it's hard to stand back and see the changes but I am satisfied that everything's moving forward in a positive direction."

State Grants Support Expansion of ASA's Conservation Programs

ASA has received two important grants from the New York State Conservation Partnership Program, which is administered by the Land Trust Alliance Northeast Program. The first helps the owner of a 200-acre farm in Hoosick donate a conservation easement on her property by covering some of the transaction costs associated with the project. The second grant will enable ASA to steward its existing easements by updating baseline documentation according to current legal standards and practices.

Executive Director Teri Ptacek explains, "The State's Conservation Partnership Program is an invaluable tool for the land trust community. We have received funds that have helped our organization grow and expanded our ability to help a diverse group of landowners meet their conservation goals."

ASA to Manage Rensselaer County Farmland Protection Program

The Rensselaer County Legislature has passed a resolution to have ASA administer the County's farmland protection program. Ken Herrington, County Legislator and Chair of the Rensselaer County Ag & Farmland Protection Board, explains, "ASA has the expertise and proven track record we need to protect the county's valuable agricultural land. With their help we hope to protect at least 5,000 acres from development in the next few years."

Last year, four key farms in Rensselaer County, totaling 1,562 acres, were awarded state farmland protection: Moses Farm, Evergreen Farm, Maple Lane Farm, and St. Croix Farm. This year, in partnership with the towns of Pittstown and Schaghticoke and Rensselaer County, ASA has prepared applications for five more farms totaling 1,709 acres.

The Town of Pittstown has demonstrated their support by becoming members of ASA and providing critical funding for conservation work in their town.

Volunteers are the Heart of ASA

If You'd Like to Help Protect Our Farms, Call ASA at 692-7285.

When I win the lottery, after I have installed the pool and pool-boy, I will give ASA a pile of money. Literally. I'm going to show up at the office one day with big wads of cash and toss them around like the Money Fairy. I will invite the staff to roll around in it and be disappointed if they show some dignity and refuse. That is what I'll do when I win the lottery. While I'm waiting for that to happen, I've been volunteering my time stuffing envelopes (good doughnuts), monitoring farms (gorgeous land), and helping out with events (all the cheese I can eat!).

I recently acquired an unusual asset that I really had no use for: advertising space in Main Street, a local paper that regularly publishes a little column I write. After pondering the possibility



Annie Miller

of putting out ads touting myself —Check her out. Ain't she the bee's knees?— and rejecting it as too silly even for me, I hit upon the idea of donating it to my favorite local organization. I don't have a beautiful farm that I can put under easement. I don't have any artistic ability that I can hang in the annual Landscapes show. But it turns out that I do have a unique contribution to make to the people who are saving our rural community from the ground up. Thank you all for working so hard, being so successful and letting me be a small part of it. —Annie Miller, Greenwich



While not quite as thrilling as jumping from a plane, Tara Rowse found her summer internship at ASA to be a rewarding adventure.

What is an Agricultural Conservation Easement?

An agricultural conservation easement is a legal agreement between a willing landowner and a qualified organization, such as ASA, that permanently protects a property's agricultural and forestry characteristics by restricting the type of non-agricultural development that can occur on the land. In addition to farming and forestry, home-based businesses and rural enterprises are often permitted, as long as they do not negatively impact the agricultural and forestry uses of the property.

The landowner still owns the property and retains the right to sell, lease, gift or transfer it. Each easement is tailored to achieve the landowner's conservation goals and he/she continues to manage the land. ASA's agricultural easements are designed to provide the flexibility to allow for farming and other compatible uses, recognizing that farming will change over time. The right to develop the property outside of those provisions is permanently extinguished. ASA is responsible for ensuring that the purposes of the easement are upheld in perpetuity.

Here are some important points to remember about ASA's agricultural conservation easements:

> ASA works with each landowner to negotiate the terms of the easement to suit the land's conservation values and the owner's goals. In addition, if ASA determines that the farm might qualify for state farmland protection funding, ASA will work with the county agricultural and farmland protection board and the town in which the land is located to write and administer a grant application.

> Agricultural easements do not require public access to the land. To allow each farm family to consider various aspects of conservation during the process, ASA maintains confidentiality while working with the family. The conservation transaction becomes public record when it is recorded with the county clerk.

> Easements can be donated, sold or a combination of both. Landowners who donate an easement are often able to take advantage of significant state and federal income tax deductions, generally 30-50% of their adjusted gross income for up to six years against the value of the easement donation.

> If funding is available, landowners can sell their development rights and extract equity from their land without selling it for development. Landowners can also combine both approaches, selling their easement at a reduced rate (bargain sale), and receive both equity and tax benefits.

For more information on agricultural conservation easements, visit www.agstewardship.org and download ASA's Landowner's Guide.

Grants from Two Private Foundations Enable Expansion of Conservation Program

ASA Welcomes Renee Bouplon as Senior Program Manager



Renee Bouplon on her family's farm in White Creek

As more landowners become familiar with the benefits of conserving land, an increasing number are requesting our help to protect their property. Thanks to multiple-year grants from the Castanea Foundation and the Nordlys Foundation, ASA is excited to be able to hire a new senior program manager, Renee Bouplon, to help meet the demand.

Renee has more than ten years direct experience working in the land trust community. Most recently, she was the Director of the Conservation Easement Program for the Columbia Land Conservancy, where she also served as interim co-executive director. She grew up in Cambridge, is a long-term member of ASA, and has a demonstrated appreciation for the community and working landscapes of the region. Renee enthuses, "I am proud to be part of ASA and assist the communities I grew up with and continue to cherish."

Ways to Help!

We need your help as never before. Conserving our working landscapes ensures that there will always be land available for farming and forestry in our community. It also protects valuable natural resources, wildlife habitat and the open spaces we enjoy. Everyone can play an important role in helping to conserve these lands, and we greatly appreciate your support. There are many ways you can help:

Become a member

In addition to your critical financial support, your membership demonstrates that our community supports conservation and helps ASA leverage funds from the government and private foundations.

Make a bequest

Farmland and forestland conservation requires ASA to be the long-term stewards of each conservation easement agreement. Your bequest can help ensure that ASA has the resources to do this, as well as step up the pace to conserve new lands before they are lost to unplanned development. Consider making a lasting impact by leaving a gift of land or property in your will to ASA.

Volunteer

ASA needs volunteers to help with monitoring, taking digital photographs of beautiful landscapes, assisting with fundraising events, and implementing membership mailings.

Conserve your land

You can become a conservation leader by protecting your land and ensuring that it will retain its rural character for years to come.

Host a neighborhood gathering

Introduce your friends and neighbors to land conservation by hosting an informational get-together with ASA board and staff.

For more information, contact Meegan Finnegan at (518) 692-7285 or by e-mail at asa@agstewardship.org.



It Takes Your Support to Make Farmland Protection Happen.

The board and staff of the Agricultural Stewardship Association would like to extend our sincere thanks to everyone who has made a contribution since our last newsletter. The conservation work we do depends on the generosity of people like you; with over 25 new projects in the works, each contribution will go a long way towards protecting our area's most treasured farms and forests.

Reflected below are contributions made between April 27, 2007 and October 12, 2007. Every effort has been made to ensure this list is accurate. Please contact Meegan Finnegan at 692-7285 to note any changes that should be made for the next issue of our newsletter.

Foundations

Anonymous Local Foundation
Castanea Foundation
The Conservation Fund
Norcross Wildlife Foundation
Nordlys Foundation

Government

Senator Joe Bruno
Senator Betty Little
Assemblyman Roy McDonald
New York Conservation Partnership Program*
New York State Dept. of Agriculture & Markets

Cream of the Crop

Anonymous (2)
Agard & Lapan Land Surveying
Alan Brown Realty
James Alcott
The Chazen Companies
Caroline Eastman and Bertram H. Freed
Judd Kahn and Anne Rogin
Peg Olsen
Owl Pen Books
The Phantom Laboratory
Town of Pittstown
Jane and David Suttle
Whiteman Osterman & Hanna LLP

Benefactor

Anonymous (2)
Norman and Gertrude Allen
Matthew Bender IV
Russell and Elizabeth LaCroix
Teri Ptacek
Reynolds Real Estate
James R. and Gretchen D. Ruhl
Bob Webster

Sustaining

Anonymous (1)
3-Corner Field Farm
Dr. Gretchen Allen and Dr. Margaret Horn
Hugh Amoroso, Triple I Farms
Gordon Ashton
Vance and Shawn Bateman
Battenkill Veterinary Bovine PC
June Bell
Better Bee
Douglas and Linda Bischoff
Black Creek Valley Farms, Inc.
Michael and Wendy Bittel
Booth's Blend Compost
Renee Bouplon

Jonathan and Judith Bridge
Caffry & Flower, Attorneys at Law
Cambridge-Pacific, Inc.
Grace Campbell
Matt and Peggy Cannon
Capital Tractor, Inc.
Paul and Nancy Charbonnel
The Chronicle - Mark Frost
Circus Cafe
John Cogan, MD
Con Brio Performing Arts
Kerri Culhane and Jason Black
Eleanor S. Darcy
W. Marvin Day
Al DeKrey, McGrath & Co.
Dickenson & Company CPAs
James E. and Carole J. Dilley
El Paso Energy
Gerard and Anna Falotico
Jon Farbman and Jacqueline West-Farbman
Jon Feidner
Bill Figlozzi and Margaret Waterson
First Pioneer Farm Credit
Edith Gambie
Glens Falls National Bank and Trust Company
Bruce Goff
Jeff Goodell and Michele Owens
Elizabeth Gordon and Thomas Christenfeld
Granville Veterinary Service
Jamie Greenberg and Mary Ann Chiariello
Terry Griffin and Peter Deming
Susan and Stephen Griffing
John and Jennifer Hand
Helping Hands Physical Therapy, LLC
Hi Brow Farms, LLC
John Hudak
Judy and Edward Hughes
Jordan and Kelly LLC
Vincent Kelleher and Richard Bump
Kenyon Hill Farm
Christopher and Adrienne Kimball
Judith Klingebiel, CPA
Carol and Ron Kuhr
Veronique de La Bruyere
Carl Laanes
Landview Farms LLC
LaVelle & Finn, LLP
Bruce McAllister
Assemblyman Roy McDonald
Maryann McGeorge
John Meagher, Thistle Ridge Farm
Mettawee River Theatre Co.

Anthony L. Montague
Mary Obering
Patire Cheverole - Buick Inc.
Premier Dairy Service LLC
Charles and Marcia Reiss
Rojan Farms, Inc.
Dee Romack and Jonathan Fine
Glenwood Rowse
Barney Rubenstein and Sandra Scroggins
Paula and Thor Schafer
Edith B. Schiele
Schoharie Land Trust, Inc.
Lawrence Sconzo and Laurie Simon
David Grahame Shane and Regina Wickham
Donald and Donna Skellie
Slow Foods NYC
Clifford and Janet Stewart
Stewart's Shops
Daniel and Deko Stone
Stone Hill Farm - Greg and Ellenor Hansen
John Stokowski & Sons Inc.
William and Angela Sturgis
Robert Taylor
Throop Integrity Builders - Mitch Throop
Fred Tomkins
Toolite Farm LLC
UBS Financial Services Inc.
Walkers Farm, Home and Tack
Ann T. Whalen
Wiley Borthers, Inc.
Mary Ellen Williams
Ralph Work
Mike and Kathy Zdeb
Supporting
Anonymous (4)
Ackley & Ross Funeral Home
Gail Anderson and Dan Dudek
Judy Anderson
Vincent Kelleher and Michelle Schreiner
Andrew Pate Design
Nancy Battis
William Belickis
Borador Animal Hospital, PC
Ronald and Leslie Bouplon
Bill Briggs
Janet Britt and John Dojka
Marion and Morrison Brooks
David and Mary Jo Burton
Pam and Joe Cali
Donald and Betty Lou Campbell
Leon and Alane Clark
Laura Coldwell

Cornell Cooperative Extension
Deep Roots Holsteins
Mr. and Mrs. Joseph Donahue
Tom and Pam Duffy
Bill Eberle
Ron Edsforth and Jo Devine
Ed and Mary Feidner
Dennis and Ella Felcher
Pastor Raymond A. Felt, Sr.
George E. Foster
Al and Nancy George
Jeffrey and Fran Goldstone
Tom and Rulyn Graves
James and Linda Green
Carol Hand
Wendy Hand and Claudine Klein
Sophia Healy
Field Horne
Norma Hurlburt
Ruth Ihne
Munir and Ellen Jabbur
Judith Kleinberg and Ivan Kazen
Ruth and Sandy Lamb
Roy and Shirley Lerman
Rob Mackenzie
Main Street Counseling
Rebecca S. McLachlan
Theo Maione and Marie Ann McCue
Dr. and Mrs. Patrick McCullough
Mary Ann and John T. Mitchell
Melissa Murray
Christopher Pierce and Thomas Defrantz
Yvonne Porter
Merrilyn Pulver
Sue Quillio and Timothy Holmes
Douglas Reed and Margaret Winship
Craig Roods
Margaret Rossi
Helen Ruddock
Paula J. Sawyer
Schoolhouse Boatworks
Michael and Michelle Schreiner
M.S. Sherwood
Nancy Sherwood
Ray and Mary Ann Short
John and Ann Sieckhaus
Peter Signorelli
Tom and Barbara Simoneau
Ruth and Jim Simring
Sno Kats Snowmobile Club, Inc.
Mr. and Mrs. J.B. Sobing
Gary Sytsma and Angelynn Cerridwen
Andrew and Terry Teitelbaum
Jim and Kay Tomasi

Thank You.

Bill Tomkins and Kathy Nichols-Tomkins
Anne O. Torrens
David and Ann Townsend
Phyllis and Wayne Underwood
Diana and John Waite
Caroline Welling and David McGuire
Rey Wells
Kerry Woods and Catharine Lewis
Alexander and Marine Zagoreos

Friends

Anonymous (1)
Gordon Adams
Hilary Allison
Jennifer Audette
Pamela Melville and Emily Baisley
Jennifer and Paul Baker-Porazinski
Michael Benson
Pamela Bentien
Stacey Bloomfield
Don and Tracey Boyd
Jean Carlson
Jessica Chittenden
Arthur and Ruth Clayman
Meg Connolly
Mary Jane Connor
Kimberly Cutting-Michel
Gerry DeLazzerro
Charles Dewey
Rod Evans and Julie Piccolo
Leslie Ferst and David Bayne
Cathy Firman
Deborah Forlizzi
John and Janet Friauf
John and Babette Furman
Karen Gaul
Karl Gausewitz
Philip Gitlen and Melody Mackenzie
Steven Goldgram
Christina Grossi
Dale Hall and Mary Laedlein
Kathryn Hayden
David and Nancy Higby
Marcia Hopple
Seth Jacobs and Martha Johnson
Christie Keegan
Leonard Kerr
David Kievit and Dorothy Harrop
Ken Kievit
Reginald H. Kilmer II
Jeffrey and Joanne Lathrop
Jeannine Laverty
Seth Leech
Catherine Littlehale-Nelder
Robin Lyle
Laurie MCDermott and Anne Downes
Trish and Mark McSweeney
James A. Ballard and Lorraine J. Merghart Ballard
Roger Meyer
Annie Miller and Don Minkel
Frank Musso
Carolyn Paine
Leslie Parke
Judy and Stephen Patrick
Don Pompliano
Penelope Poor
Elaine Radiss and Rich Petrino

Pedro Ramirez
Laura and Colby Reynolds
Marjorie and Joseph Robertson
Kathy and Hugh Roome
Joan and Erich Ruger
Kurt and Donna Ruppel
Chuck Schmitt
David Smith
Dixie Smith
Steve Stearns and Sarah Hoffman
Hannah Stevens
Kathleen Taylor
Stefan Thomas
Jo Thornton
Lisa Towne
JoAnne Towne
Beth Trabka and Kevin Kuzmich
Brian Trombley and Kristal Van Dyke
Peter Van Dyke
Marianne M. Vernon
Kevin Watz and Kristen Durkee
Alan Wheelock
Jan and Thomas Wolski
Becky and Jeffrey Wright Sedam
Marilyn Zaborek

* The New York State Partnership Program is administered by the Land Trust Alliance Program with support from the State of New York.

Thank you Volunteers!

ASA would like to give special thanks to the people who help us stewarding easements, mailings and special events (see Landscapes and Tour de Farm articles) as well as those that lend us their professional expertise. We really appreciate your help!

Doug and Linda Bischoff,
Mary Jo Burton, Molly Coogan and Brendan Dickerson, Clem and MaryDee Crowe, ML Healy, Hank Howard, Mary Beth Hynick, Don and Kathy Idleman, Al Klein, John LaValle, Millicent and Ed Lawrence, Katherine Littell, Annie Miller, Don Minkle, Glen Nesbitt, Cliff Oliver, Art Place, Jill Robinson

Seminar Builds Network of Local, Professional Conservation Experts

When the Ziehm family decided to conserve their dairy farm, they met with a lawyer, a tax accountant and a financial advisor. Not every conservation transaction is as complex as a state-funded Purchase of Development Rights (PDR) project, but most landowners will benefit by consulting with experienced professionals who have conservation expertise.

A grant from the Nordlys Foundation allowed ASA to partner with Saratoga PLAN and begin a program to build legal and financial expertise in conservation transactions in order to benefit landowners in the region. In July, ASA brought Stephen Small, a tax attorney who (as an advisor in the Office of Chief Counsel of the IRS) wrote the regulations on conservation easements, to give an accredited seminar to local accountants and attorneys and a talk to landowners.

To further develop area conservation expertise, ASA is working with professionals to develop a series of case studies based on different financial scenarios. A number of professionals will also participate in a program offering a pro bono, initial consultation to landowners who are interested in conserving their land. If you are interested in learning more about these programs, contact Meegan Finnegan at (518) 692-7285 or by e-mail at asa@agstewardship.org



Landscapes Show Raises Awareness and Funds for Conservation Work

The sixth annual Landscapes for Landsake art event was our most successful show yet! More than 600 people came over the course of the Columbus Day weekend to enjoy art from 21 artists and show their appreciation for farmland conservation. More than 40 works of art were sold with ASA receiving 50% of the proceeds to support its conservation programs.

Meegan Finnegan, the show's organizer, said, "This year, we had a terrific group of artists, tremendous support from local businesses, and a dedicated group of volunteers. Barbara Price did a magnificent job curating the show. Together, everyone involved made this both our most productive fundraiser to date and a wonderful opportunity to talk to people about conservation."



Left: "Winter Convoy" by Harry Orlyk

Above right: "Adams' Barns" by Mallory Rich

Below right: Regina Wickham and David Graham Shane with curator Barbara Price (center)

Below left: "Melvin and Doeling" by Dona Ann McAdams



Thank You Everyone Who Made Landscapes a Great Success!

Hosts: Larry Sconzo and Laue Simon
Artists: Stephen Alcorn, Roy Arenella, Richie Bittner, Alan Brown Sr., Gerald Coble, Charl Elias, Clarence King, Karen Koziol, Dona Ann McAdams, Leah McCloskey, Patricia McEvoy, Virginia McNeice, Bob Nunneley, Harry Orlyk, Leslie Peck, Mallory Rich, Tina Sotis, Marguerite Takvorian-Holmes, Mark Tougias, George Van Hook, George Wilson.

Major sponsorship by: The Fort Miller Group, Inc., Agard & LaPan Land Surveying, Alan Brown Realty, The Chazen Companies, The Kinderhook Group Inc., Owl Pen Books, and Whiteman Osterman & Hanna LLP. **Additional Sponsors include:** Reynolds Real Estate, Cambridge-Pacific, Inc, Dickenson & Company CPAs, John Stokowski & Sons, Premier Dairy Service LLC, Stewart's Shops, Wiley Brothers, Battenkill Veterinary, PC, Caffry & Flower, Attorneys at Law, The Chronicle, First Pioneer Farm Credit, Glens Falls National Bank and Trust Company, Granville Veterinary Service Helping Hands Physical Therapy, LLC, Jordan & Kelly, Judith Klingebiel, CPA, Throop Integrity Builders, Walker's Farm, Home and Tack, Borador Animal Hospital, PC, and UBS Financial

Services Inc. **Volunteers:** Jim Andrews, Andy Beer, Ashley Bridge, Judy Bridge, Mary Jo Burton, Paul Charbonnel, Dave Chojnacki, Thomas Christenfeld, Alane Clark, Molly Coogan, Clem and MaryDee Crowe, Megan Elias, Kathy Firman, Betsy Foote and Future Farmers of America, Liz Gordon, M.L. Healy, Don and Kathy Idleman, Jana King, David Lawlor, Ed and Millie Lawrence, Beth Meers, Annie Miller, Hanna Reeves, Jim Schanz, Megan Tompkins, VOSCA, Ben Zipperer, and ASA Board members. **Thanks to the following businesses for providing services and supplies:** The Black Dog Wine & Spirits, Capital Tractor, Gardenworks, Jonathan Barber Photography, Peckham Industries, Tiashoke Farm and the Washington County Fair.

ASA Teams with Cambridge Valley Cycling and Farm Team Cycling to Offer Tour de Farm Bike Ride

With a grant from the NYS Department of Agriculture and Markets and help from Cambridge Valley Cycling and Farm Team Cycling, ASA launched its first Tour de Farm bike ride in September. The supported, 21.5-mile tour was designed to promote an awareness of conservation and support local farmers. It drew more than 80 enthusiastic cyclists.

Beginning at the Cambridge Farmers Market, cyclists rode to the recently conserved Tiashoke Farm in Buskirk and toured the dairy. From there, they went on to visit the Moses Farmstand in Eagle Bridge, where they bought produce and learned that this historic farm has been awarded farmland protection funding and is in the process of being conserved. Some visited the nearby Mt. Nebo Gallery to see Will Moses' paintings depicting rural life.

Next, they rode through scenic White Creek, passing the Chinian and Perry easements, and stopped at Perry's Orchard for some delicious apples and at Happenstance Farm for organic veggies before heading back to the Farmers Market.

ASA president Seth Jacobs was among the riders. "It was thrilling to hear from several participants who said they came not only to see the farms but to hear firsthand from the farmers. They found this a unique way to experience how farming has shaped our landscapes."

Participants received vouchers from ASA to spend at the stops and coupons donated by local farmstands. ASA plans to offer more rides in the future. If you'd like to bike or drive the tour, copies of the map, with a description of the farms, are available by contacting ASA at asa@agstewardship.org.

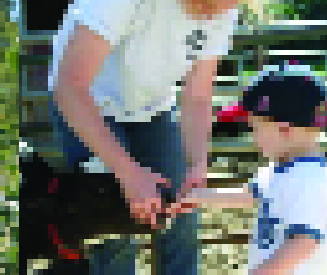
Thank You Tour de Farm Volunteers!

Jana King and Cambridge Valley Cycling, Deiter Drake and Farm Team Cycling, Paula Schaefer and Cornell Cooperative Extension, Shirley Parker and Christ the King Spiritual Life Center, Justin Stevens and Better Bee, Sarah Ashton and the Cambridge Valley Community Development and Preservation Partnership, Geoff and Christine Hoffer of The Rice Mansion Inn, Judith Kleinberg, Mary Ellen Williams, Judy Leon, Rebecca Sparks, Ken Gottry, Dave Krauss, McKenzie Levy, The Ziehm Family of Tiashoke Farm, Rich and Kathy Moses of Moses Farm, Will Moses of Mt Nebo Gallery, Jamie Snyder of Happenstance Farm, Jim Perry of Perry's Orchard, Paul Gower and The Cambridge Farmers Market, Something's Brewing, Long Days Farm.



Cyclists enjoyed meeting local farmers and learning about their operations and views on conservation.





ASA Launches Program to Connect Kids to the Land

Local farms worked with ASA this summer to give kids and their families an opportunity to come for a visit and get a taste for farming. Watch for details as we schedule events for next year.



Agricultural Stewardship Association

28R Main St., Greenwich, NY 12834
Tel (518) 692-7285
Fax (518) 692-7720
Email asa@agstewardship.org
www.agstewardship.org

RETURN SERVICE REQUESTED

This four color newsletter was partially underwritten by a grant from The Conservation Fund.
Photography by Meegan Finnegan, Jim Newton, Cliff Oliver, Paula Schafer and Mary Ellen Williams.
Design by Ruth Sadinsky.